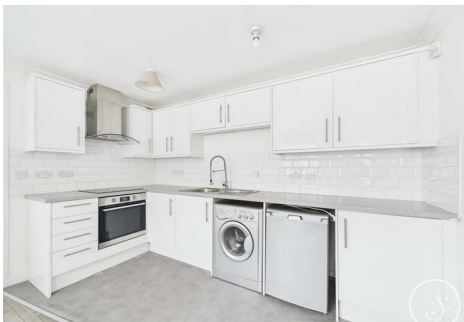




**Stoneacre**  
Properties



**Clock Tower Lofts, Leeds, LS15 0QL**  
**£62,000**

Stoneacre Properties are delighted to be able to offer for sale a one bedroom apartment, located on the ground floor of a modern purpose built block. The flat, which has its own entrance, is located in the heart of Halton and is therefore moments away from all local amenities as well as being close to transport links into Leeds City Centre. Offered as a ready made investment with a tenant in situ currently paying £600pcm. The accommodation comprises of an open plan kitchen/living area, bedroom and shower room. Off street parking is also included. Early viewings are advised. Please call a member of our team for further information.

Kitchen/Living Space



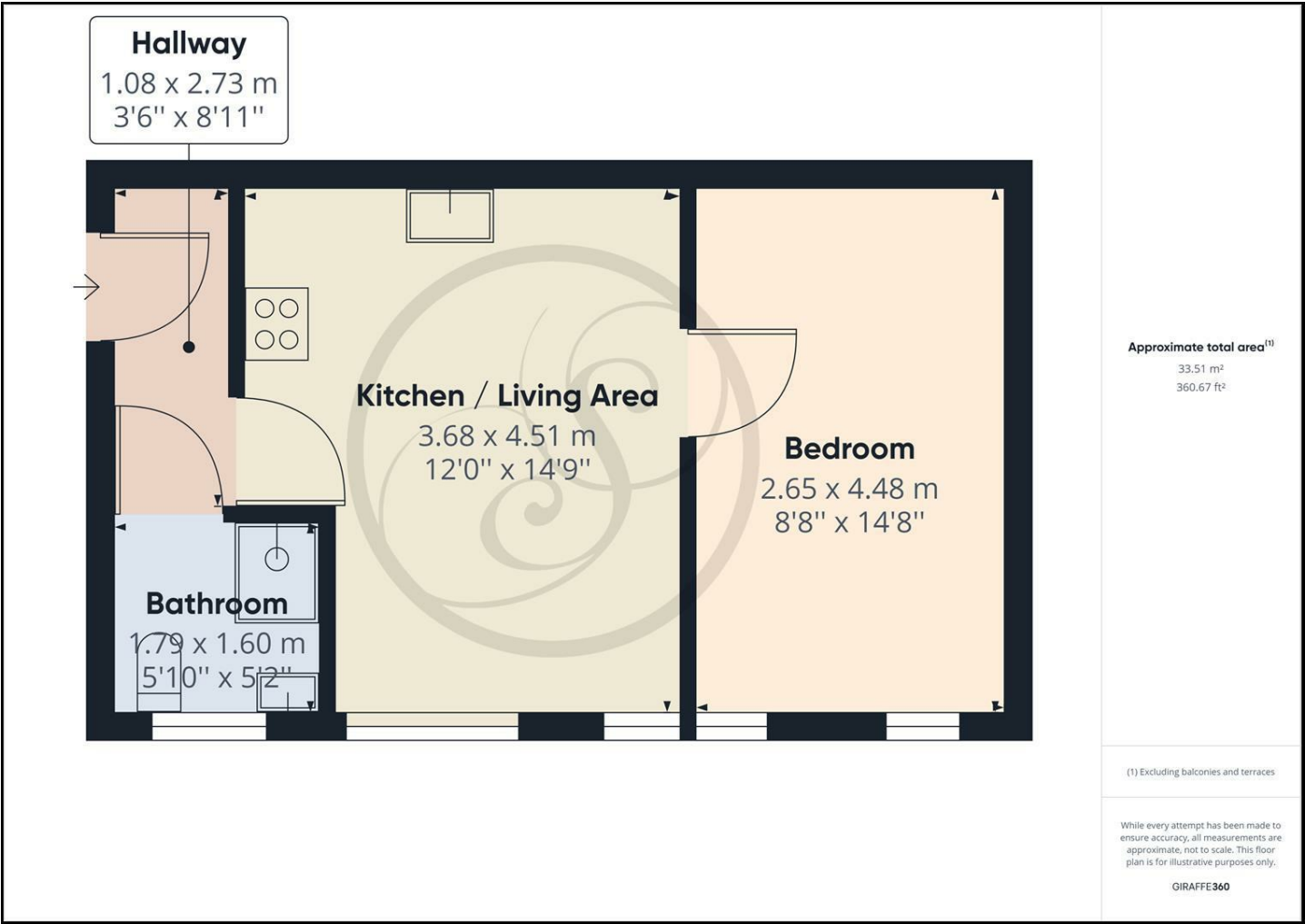
Bedroom One



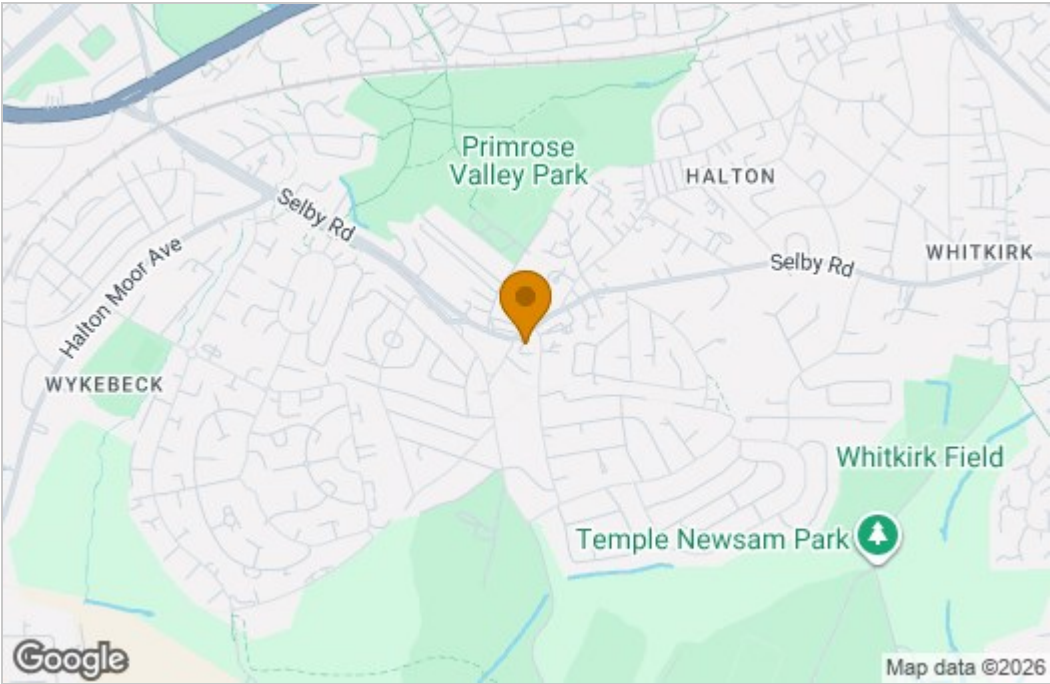
Shower Room



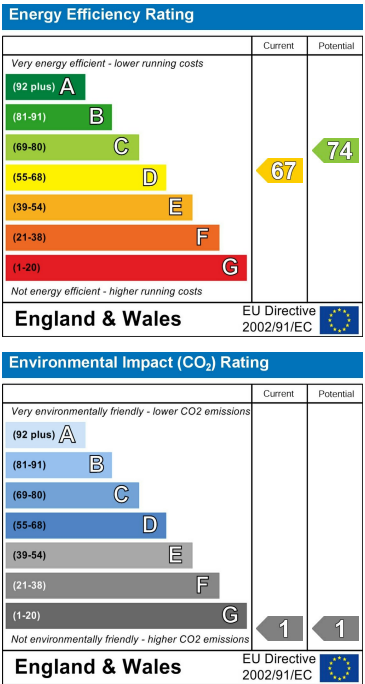
Floor Plan



Area Map



Energy Efficiency Graph



These particulars, whilst believed to be accurate are set out as a general outline only for guidance and do not constitute any part of an offer or contract. Intending purchasers should not rely on them as statements of representation of fact, but must satisfy themselves by inspection or otherwise as to their accuracy. No person in this firm's employment has the authority to make or give any representation or warranty in respect of the property.

